


An underwater photograph showing a large amount of plastic waste, including crumpled white plastic bags and fragments, floating in dark blue water. The scene is dimly lit, with some light reflecting off the plastic pieces.

**KEEP PLASTIC WASTE OUT OF OUR OCEANS – NOW!**

**#ISWA2017**

**ISWA  
MARINE  
TASK FORCE**

The logo for the ISWA Marine Task Force, featuring the text "ISWA MARINE TASK FORCE" in a bold, sans-serif font. To the right of the text is a circular icon containing a stylized wave pattern.



C



B



A



D

E

F

# THE REPORT

[DOWNLOAD](#)

## CONTENTS

Statement from the ISWA President	iii	3 Stop the Leakage – Now!	24
Executive Summary	iv	— 3.1 Introduction	24
Contents	vi	— 3.2 Preventing littering	29
1 Introduction	1	— 3.3 Providing waste management for everyone	31
2 Sources, pathways, transformations and fate of marine litter	2	— 3.4 Closing dumpsites	37
— 2.1 Introduction	2	— 3.5 Working with the Maritime Sector	40
— 2.2 Sources	3	— 3.6 Capturing and Enhance plastic value capture	44
— 2.2.1 Overview	3	— 3.6.1 Introduction	44
— 2.2.2 Littering	3	— 3.6.2 Improving collection systems for waste plastics	44
— 2.2.3 Uncontrolled dumping	4	— 3.6.3 Creating strong and stable markets for recycled plastics	49
— 2.2.4 Escape of plastics from mismanaged solid waste management activities	7	— 3.6.4 Thermal Recovery	51
— 2.2.5 Industrial sources	9	— 3.7 Step-change from the linear use of plastics to a sustainable and proven circular and cascading system	52
— 2.2.6 Agricultural and horticultural sources	9	— 3.8 Innovative and invent at the materials and the processing level	52
— 2.2.7 Fisheries and shipping in waterways	10	— 3.8.1 Reducing single-use items	52
— 2.2.8 Sanitary items and consumer cosmetic products	10	— 3.8.2 Designing for recyclability and value retention	53
— 2.2.9 Synthetic fibres from washing clothes	11	— 3.9 Policy & monitoring progress	54
— 2.2.10 Micro-plastics from road vehicle tyres	11	4. The next steps	55
— 2.3 Pathways	13	— 4.1 Priority interventions	55
— 2.3.1 Introduction	13	— 4.2 ISWA's current activities	55
— 2.3.2 Rivers: both a hotspot and a pathway	13	— 4.3 The Task Force's next steps	56
— 2.3.1 Drainage systems and flooding events	16	5 Support our efforts	57
— 2.3.2 Sewers Overflow	17	6 Key references	58
— 2.3.3 Wind blown litter	18	7 The Marine Litter Task Force Core Team	67
— 2.3.4 Atmospheric Inputs	18	8 Back page	69
— 2.4 Transformations	20		
— 2.5 Fate (final sinks and permanent stocks)	21		

ISWA  
MARINE  
TASK FORCE

**PREVENT MARINE  
PLASTIC LITTER - NOW!**

AN ISWA FACILITATED PARTNERSHIP TO PREVENT MARINE LITTER, WITH A GLOBAL CALL TO ACTION FOR INVESTING IN SUSTAINABLE WASTE AND RESOURCES MANAGEMENT WORLDWIDE

ISWA  
MARINE  
TASK FORCE



A GLOBAL CHALLENGE



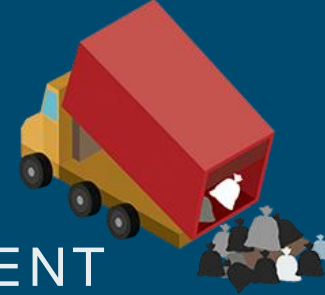
ISWA  
MARINE  
TASK FORCE

# GLOBAL SYSTEMIC FAILURES



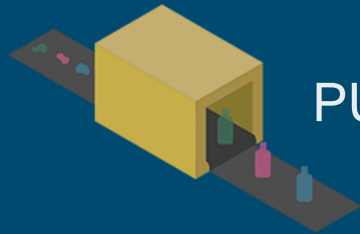
1

MATERIALS AND  
CONSUMPTION



2

INSUFFICIENT  
INFRASTRUCTURE



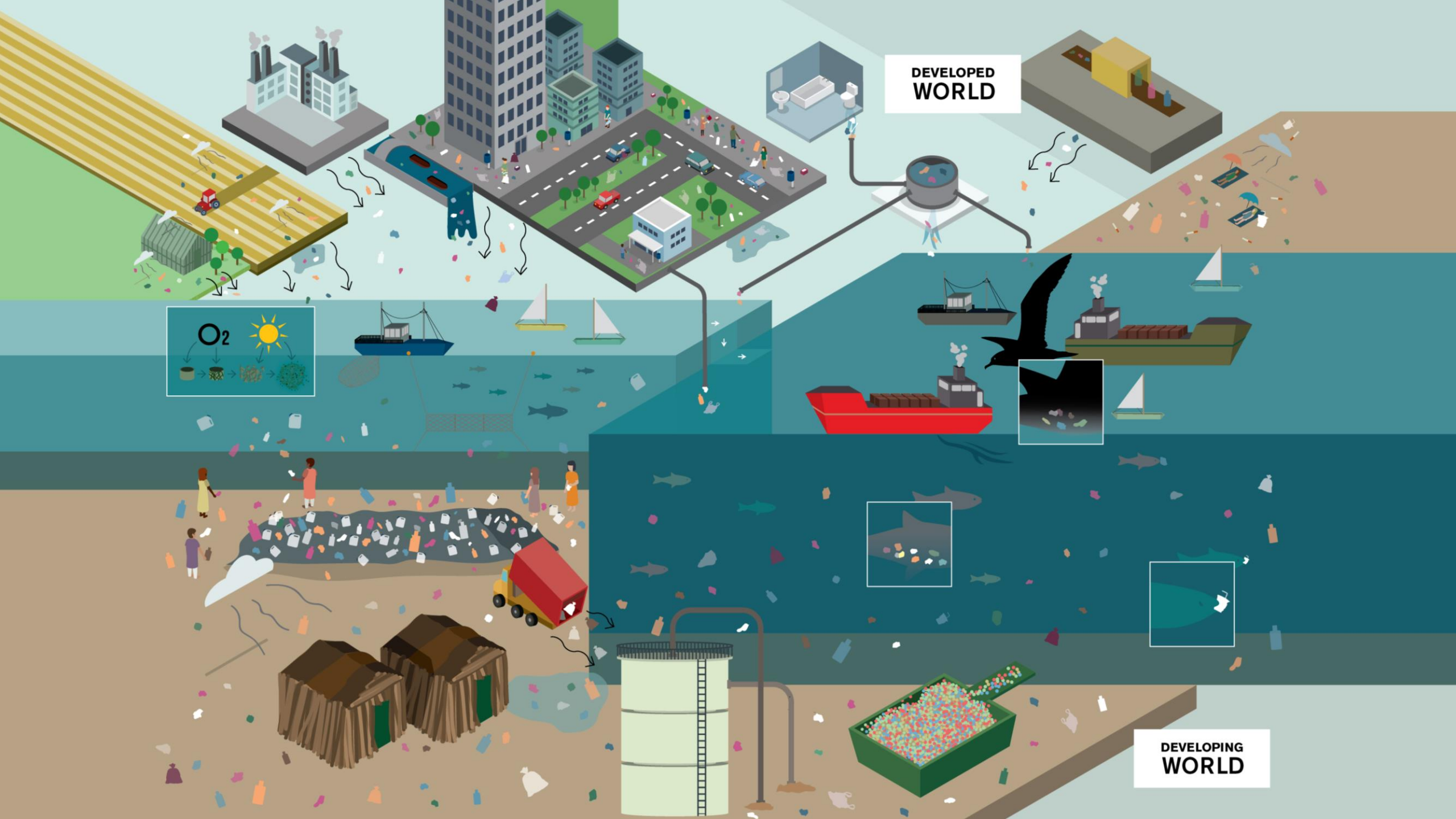
3

PUSH MARKETS

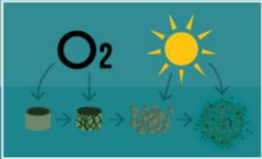


4

KNOWLEDGE  
GAPS



DEVELOPED  
WORLD



DEVELOPING  
WORLD











# INTERVENE AND GET RESULTS - NOW!



## CORE PRIORITIES FOR RESULTS NOW!

1

SOUND COLLECTION  
FOR ALL

2

STOP FLY-TIPPING  
AND LITTERING

3

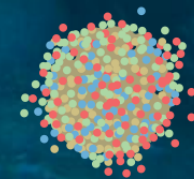
CLOSE DUMPSITES  
(NEAR WATERBODIES)

# INTERVENE BEFORE MACROPLASTICS TRANSFORM INTO MICROPLASTICS

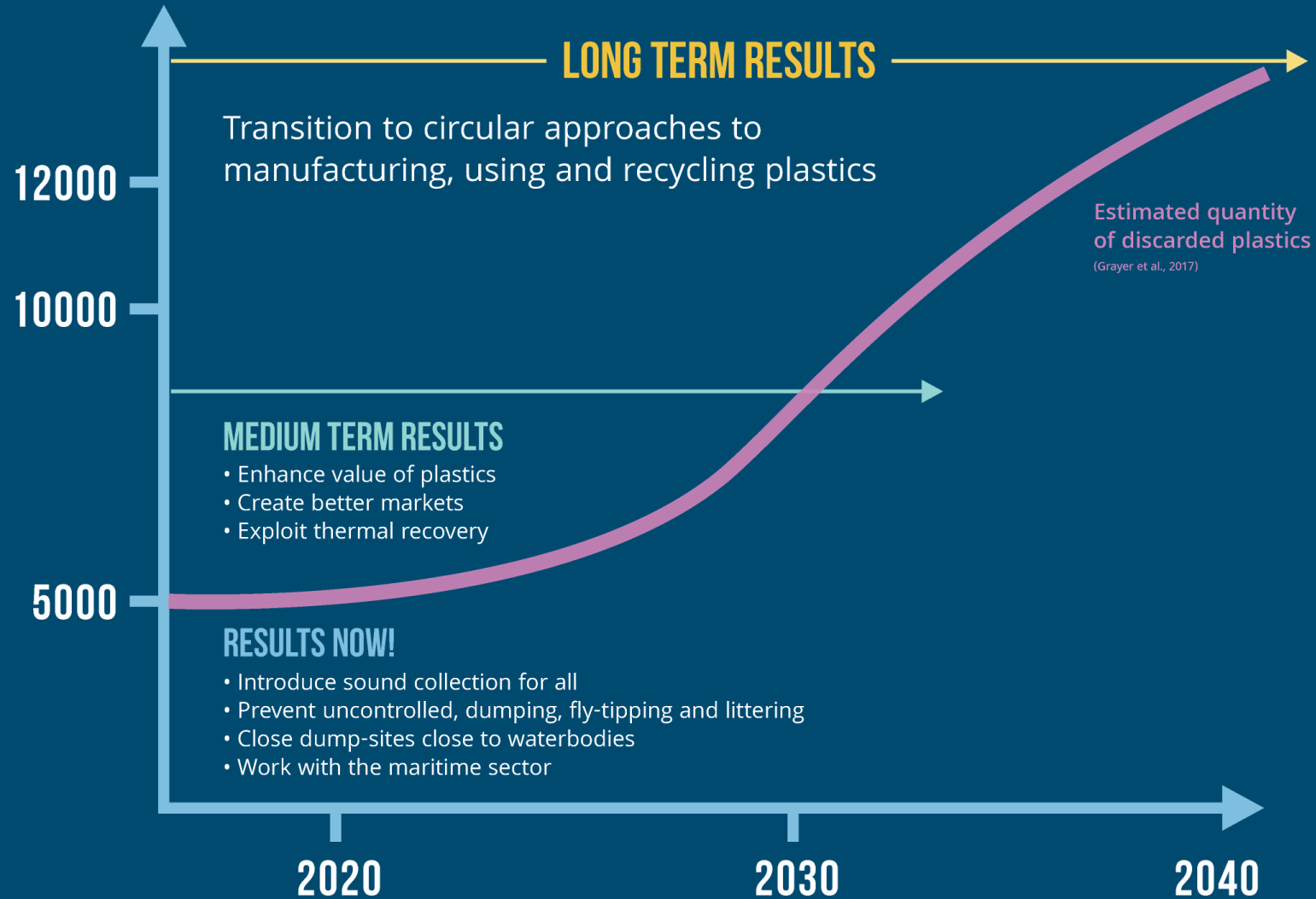
MACROPLASTIC



MICROPLASTIC



# DIFFERENT INTERVENTIONS - DIFFERENT TIMESCALES



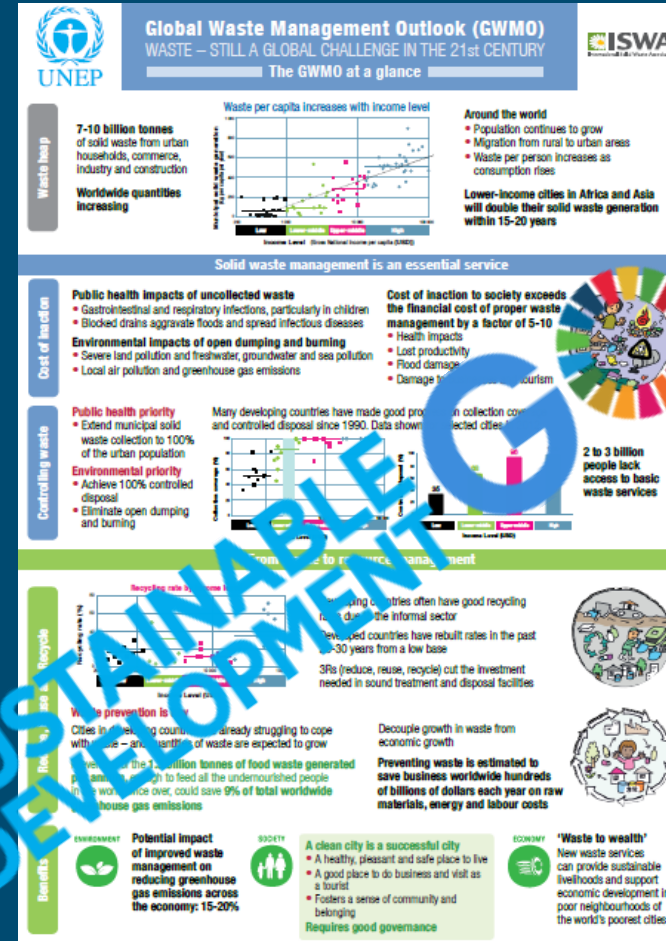
**14.1 - By 2025, prevent and significantly reduce marine pollution of all kinds, in particular from land-based activities, including marine debris and nutrient pollution**

**1.4.1- Proportion of population living in households with access to basic services**

**11.6.1- Proportion of urban solid waste regularly collected and with adequate final discharge out of total urban solid waste generated, by cities**

**12.5.1- National recycling rate, tons of material recycled**

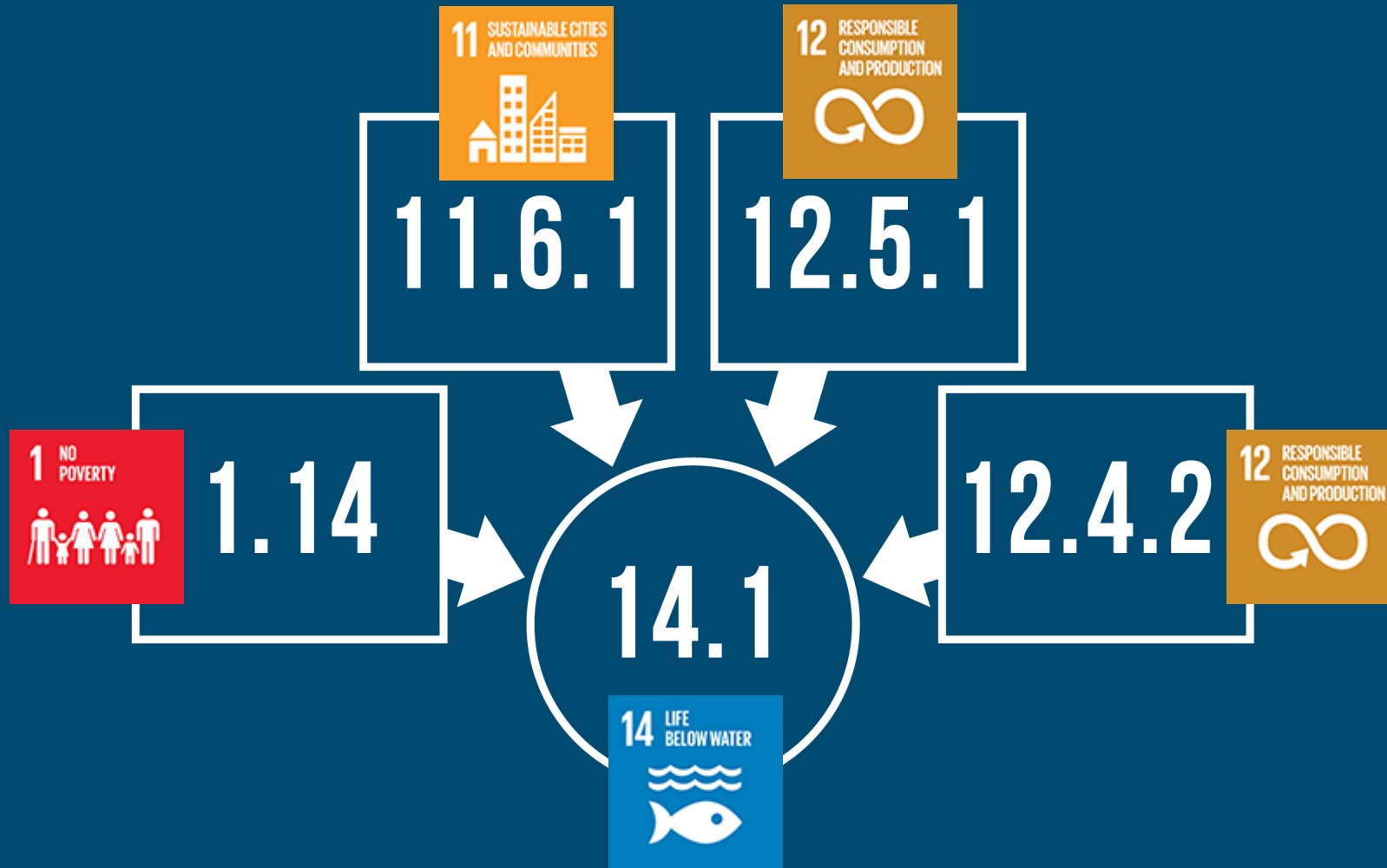
**12.4.2 - Hazardous waste generated per capita and proportion of hazardous waste treated, by type of treatment**



ALS



# SUSTAINABLE DEVELOPMENT GOALS



# ISWA

- Share best practices
- Identify hotspots for prioritizing intervention
- Actively participate in other major efforts and international fora
- Create an information and facilitation platform

# PARTNERS

- Endorse the ISWA MLTF vision
- Join the the Task Force Advisory Board
- Support dissemination and impact
- Invite ISWA to your initiatives
- Co-create with ISWA localised solutions

# THE REPORT

[DOWNLOAD](#)

## CONTENTS

Statement from the ISWA President	iii	3 Stop the Leakage – Now!	24
Executive Summary	iv	— 3.1 Introduction	24
Contents	vi	— 3.2 Preventing littering	29
1 Introduction	1	— 3.3 Providing waste management for everyone	31
2 Sources, pathways, transformations and fate of marine litter	2	— 3.4 Closing dumpsites	37
— 2.1 Introduction	2	— 3.5 Working with the Maritime Sector	40
— 2.2 Sources	3	— 3.6 Capturing and Enhance plastic value capture	44
— 2.2.1 Overview	3	— 3.6.1 Introduction	44
— 2.2.2 Littering	3	— 3.6.2 Improving collection systems for waste plastics	44
— 2.2.3 Uncontrolled dumping	4	— 3.6.3 Creating strong and stable markets for recycled plastics	49
— 2.2.4 Escape of plastics from mismanaged solid waste management activities	7	— 3.6.4 Thermal Recovery	51
— 2.2.5 Industrial sources	9	— 3.7 Step-change from the linear use of plastics to a sustainable and proven circular and cascading system	52
— 2.2.6 Agricultural and horticultural sources	9	— 3.8 Innovative and invent at the materials and the processing level	52
— 2.2.7 Fisheries and shipping in waterways	10	— 3.8.1 Reducing single-use items	52
— 2.2.8 Sanitary items and consumer cosmetic products	10	— 3.8.2 Designing for recyclability and value retention	53
— 2.2.9 Synthetic fibres from washing clothes	11	— 3.9 Policy & monitoring progress	54
— 2.2.10 Micro-plastics from road vehicle tyres	11	4. The next steps	55
— 2.3 Pathways	13	— 4.1 Priority interventions	55
— 2.3.1 Introduction	13	— 4.2 ISWA's current activities	55
— 2.3.2 Rivers: both a hotspot and a pathway	13	— 4.3 The Task Force's next steps	56
— 2.3.1 Drainage systems and flooding events	16	5 Support our efforts	57
— 2.3.2 Sewers Overflow	17	6 Key references	58
— 2.3.3 Wind blown litter	18	7 The Marine Litter Task Force Core Team	67
— 2.3.4 Atmospheric Inputs	18	8 Back page	69
— 2.4 Transformations	20		
— 2.5 Fate (final sinks and permanent stocks)	21		

ISWA  
MARINE  
TASK FORCE

**PREVENT MARINE  
PLASTIC LITTER - NOW!**

AN ISWA FACILITATED PARTNERSHIP TO PREVENT MARINE LITTER, WITH A GLOBAL CALL TO ACTION FOR INVESTING IN SUSTAINABLE WASTE AND RESOURCES MANAGEMENT WORLDWIDE

ISWA  
MARINE  
TASK FORCE

<http://marinelitter.iswa.org/>

The screenshot shows the homepage of the ISWA Marine Task Force website. At the top right, there is a 'HOME' link with a house icon. The main header features the ISWA Marine Task Force logo on the left, which includes the text 'ISWA MARINE TASK FORCE' and the slogan 'KEEP WASTE OUT OF OUR OCEANS'. To the right of the logo is a search bar with the placeholder text 'Search...' and a magnifying glass icon. Below the header is a dark blue navigation bar with white text links for 'MARINE LITTER', 'CALL TO ACTION', 'MEDIA', 'REPORTS', 'PARTNERS', 'ABOUT US', and 'CONTACT'. The main content area is a large underwater photograph of marine litter, including plastic bottles and debris covered in algae. Overlaid on this image is the text 'OUR OCEANS ARE DYING' in a large, white, italicized font. Below this text is a yellow button with the text 'READ THE FACTS'. At the bottom of the page, there are three small, partially visible image thumbnails: the first shows a blue water surface with a white plastic bottle floating; the second shows a clear blue sky; the third shows a dark underwater scene with white fish.

ISWA  
MARINE  
TASK FORCE

# MEET US AT KEY EVENTS

THE OCEAN CONFERENCE  
NEW YORK, UN 5-9 JUNE 2017

ISWA WORKSHOP  
COPENHAGEN, DENMARK 29TH OF JUNE 2017

WORLD WATER WEEK  
STOCKHOLM, SWEDEN 26-31 AUGUST 2017

SWANA-ISWA WORLD CONGRESS  
BALTIMORE, US 22 SEPTEMBER 2017

LIFE BELOW WATER  
MALMÖ, SWEDEN 12-14 OCTOBER 2017

GLOC-3  
BALI, INDONESIA 23-27 OCTOBER 2017

BUSINESS TACKLING OCEAN PLASTIC POLLUTION  
LONDON, UK 26-27 OCTOBER 2017

KFW DEVELOPMENT FINANCE FORUM - OCEAN'S 21 SOLUTIONS  
FRANKFURT, GERMANY 21-22 NOVEMBER 2017

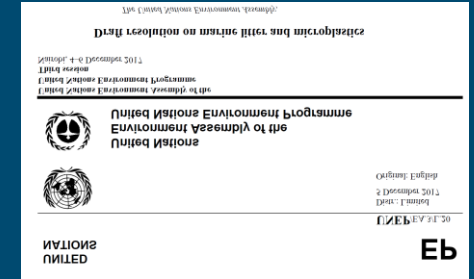
WILL YOU BE THE NEXT?

ISWA  
MARINE  
TASK FORCE

*'The UN Environment Assembly, the world's highest-level decision-making body on the environment, will gather in Nairobi, Kenya, from 4-6 December 2017 under the overarching theme of pollution.'*



## UN Resolution for marine litter – puts waste management as the top priority



*'The Development Finance Forum is the annual flagship event of KfW Development Bank. The Forum each year deals with a current and pressing issue of international development cooperation: This time it was about the world's oceans and why their protection is so important for the future of human kind.'*



**KfW event official recommendations put waste collection at top of agenda**



# 2018 DELIVERABLES: IN SUPPORT OF SOUND SOLUTIONS

INTERVENTION  
TOOLKIT

ENGAGEMENT  
PLATFORM

DISSEMINATION  
& IMPACT

**INSPIRE – INFLUENCE – ENABLE**

# GRATEFUL FOR YOUR SUPPORT



IN PARTNERSHIP WITH



SUPPORTED BY



REPORT POWERED BY



UNIVERSITY OF LEEDS



A PUBLICATION OF





# THE TEAM



[c.velis@leeds.ac.uk](mailto:c.velis@leeds.ac.uk)

**DR COSTAS VELIS**  
Task Force Leader



**MS GUNILLA CARLSSON**  
Communications Coordinator



**MR HÅKAN RYLANDER**  
Fundraiser



**MS MARIA TSAKONA**  
Researcher – International  
Consultant



**MR DAVID LERPINIERE**  
Principal Consultant,  
Resource Futures



**MS ADITI RAMOLA**  
Project Manager



**MS JENNIFER MACDONALD**  
Project Coordinator

**KEEP PLASTIC WASTE OUT OF OUR WATERS – NOW!**

**ISWA  
MARINE  
TASK FORCE**

The logo for the ISWA Marine Task Force. It features the text "ISWA" on the top line, "MARINE" on the second line, and "TASK FORCE" on the third line, all in a bold, white, sans-serif font. To the right of the text is a circular icon containing a stylized wave pattern.